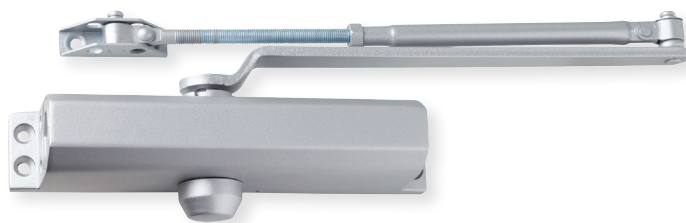


DCR8000 Series

Residential duty surface door closers



Specifications

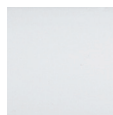
- Grade 1, UL / UL 10C Listed (non-hold open arms)
ADA compliant at size 1, (180 deg - TJ and Pull Side)
- Adjustable spring size 1-4
- 9 1/16" x 3/4" mounting hole pattern
- Independent adjustment values: sweep speed, latch speed, and back-check
- Single piece, cast aluminum body
- Universal hardware pack

DCR8000-STD-LESS-RW/PA-ALUM	STD	Less	Rw/PA	ALUM
DCR8000-STD-LESS-RW/PA-DKBRZ	STD	Less	Rw/PA	DKBRZ

Arm types

Regular arm (Rw/PA): Non-handed, regular arm with adjustable forearm assembly to accommodate a range of doors and frame reveal conditions. Mounts hinge side, top jamb or parallel arm. PA shoe included to allow installation in a parallel arm configuration.

Finishes



ALUM/689



DKBRZ/695

DCH1000, DCM1000, DCL2000 and DCR8000 Series
Drop plates

Drop plates

Product description	Plate type	Finish
DCH1000P-DP18-ALUM	Pull side/Top jamb	ALUM
DCH1000P-DP18-DKBRZ	Pull side/Top jamb	DKBRZ
DCH1000P-DP18PA-ALUM	Parallel arm	ALUM
DCH1000P-DP18PA-DKBRZ	Parallel arm	DKBRZ
DCM1000P-DP18TJ-ALUM	Pull side/Top jamb	ALUM
DCM1000P-DP18TJ-DKBRZ	Pull side/Top jamb	DKBRZ
DCM1000P-DP18PA-ALUM	Parallel arm	ALUM
DCM1000P-DP18PA-DKBRZ	Parallel arm	DKBRZ
DCL2000P-DP18TJ-ALUM	Top jamb	ALUM
DCL2000P-DP18TJ-DKBRZ	Top jamb	DKBRZ
DCL2000P-DP18PA-ALUM	Parallel arm	ALUM
DCL2000P-DP18PA-DKBRZ	Parallel arm	DKBRZ

Note: DCL2000P drop plates are also compatible with DCR8000 series closers.

DCH1000 Series



DCH1000
 Pull side/top jamb



DCH1000
 Parallel arm

DCM1000 Series



DCM1000
 Pull side/Top jamb



DCM1000
 Parallel arm

DCL2000 Series



DCL2000
 Top jamb



DCL2000
 Parallel arm